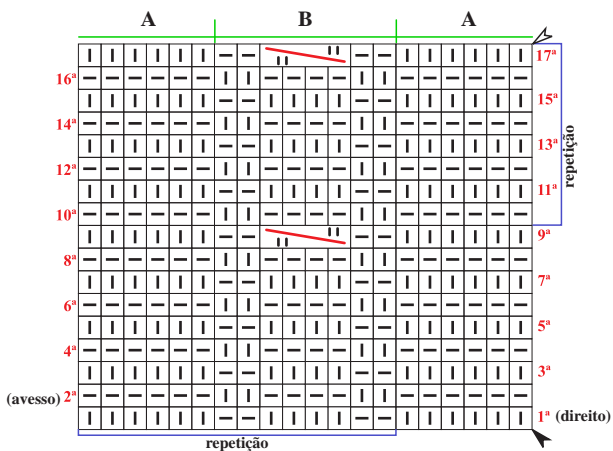


Diagrama 1 - Ponto fantasia

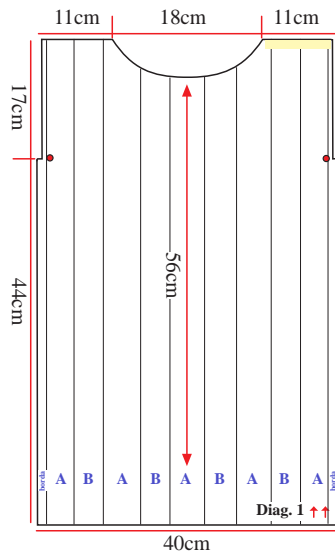
A = Ponto meia

B = Cordas

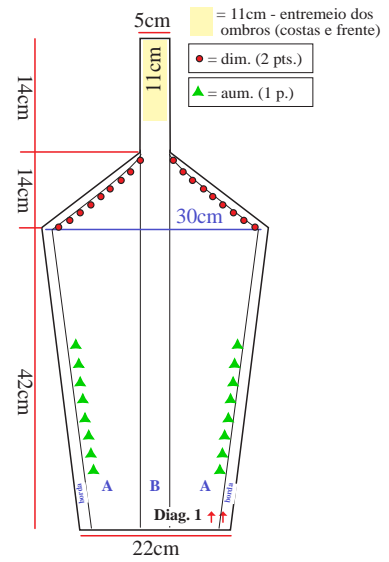


Esquema de medidas

Frente = Costas



Manga



Legenda

□ meia

□ tricô

▬ colocar 2 pts. à espera numa ag. auxiliar na frente do trabalho, 2 m., retorne o pts. deixados à espera para a ag. de tricô e trab. em m.

▲ início

△ arremate

↑↑ sentido do trabalho