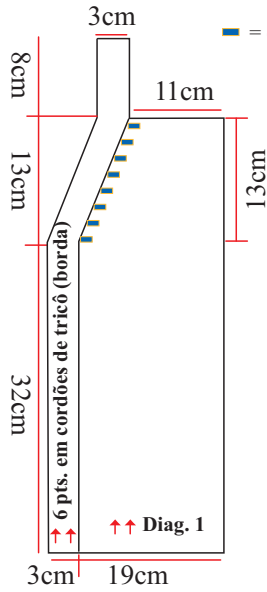


Cardigã Infantil Texturas

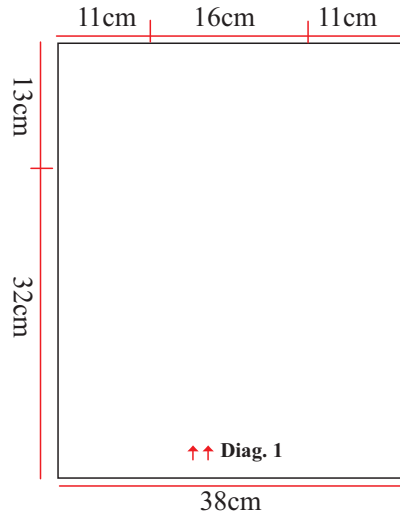
Esquema de medidas

Frente esquerda

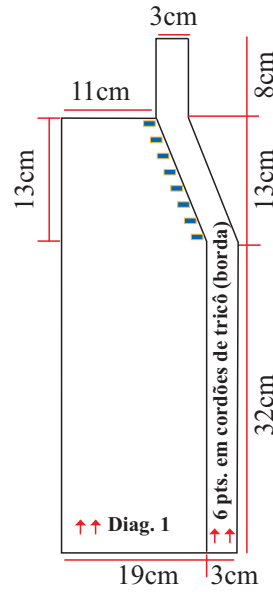


■ = dim. (2 pts.)

Costas



Frente direita



Manga
26cm

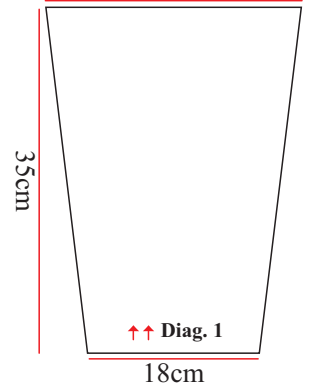
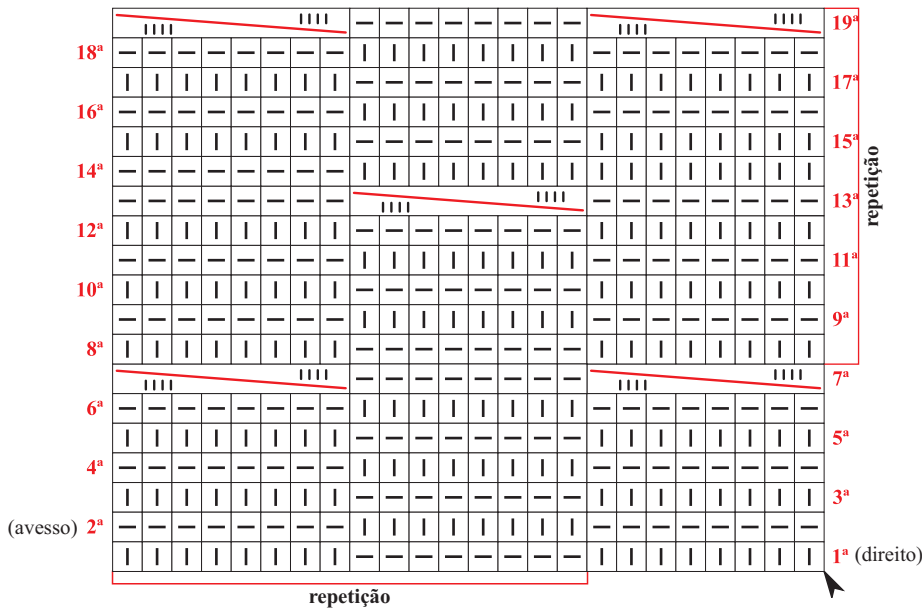


Diagrama 1 - Ponto fantasia



Legenda

□ meia

— tricô

colocar 4 pts. à espera numa ag. auxiliar na frente do trabalho, 4 m., retorne o pts. deixados à espera para a ag. de tricô e trab. em m.

▲ início

△ arremate

↑↑ sentido do trabalho