

Diagrama 1 - Barra 1/1

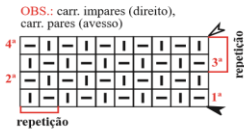


Diagrama 2 - Cordões de tricô

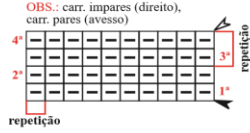
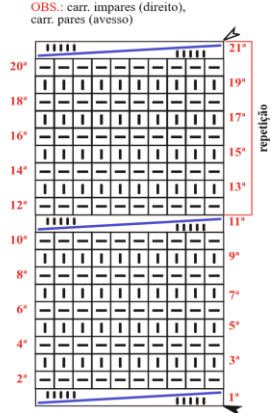


Diagrama 3 - Trança



Legenda

- meia
- tricô
- colocar 5 pts. à espera numa ag. auxiliar atrás do trabalho, 5 m., retorne o pts. deixados à espera para a ag. de tricô e trab. em m. início
- arremate
- sentido do trabalho

Esquema de medidas

