

Diagrama 1 - Ponto fantasia (A - 1ª etapa)

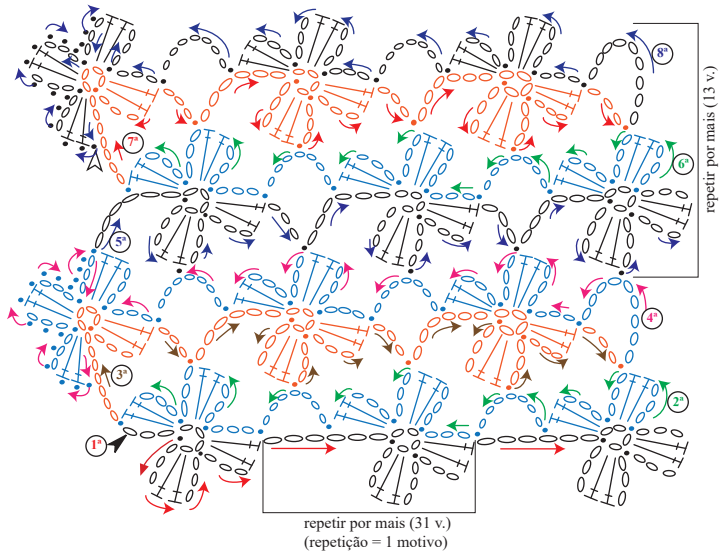
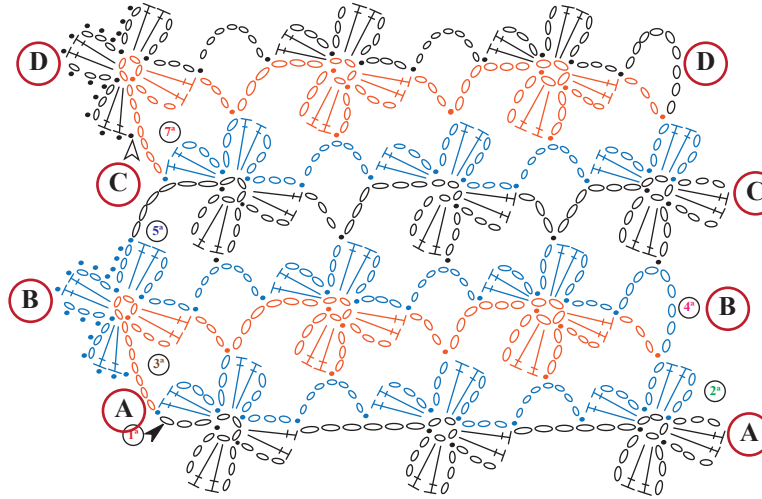


Diagrama 1 - Ponto fantasia (A - 2ª etapa)

Unir as laterais da peça feita sobre o p. fantasia (A - diag. 1), com pts. de alinhavo.
Unir (A com A), (B com B), (C com C), (D com D).



Esquema de medidas

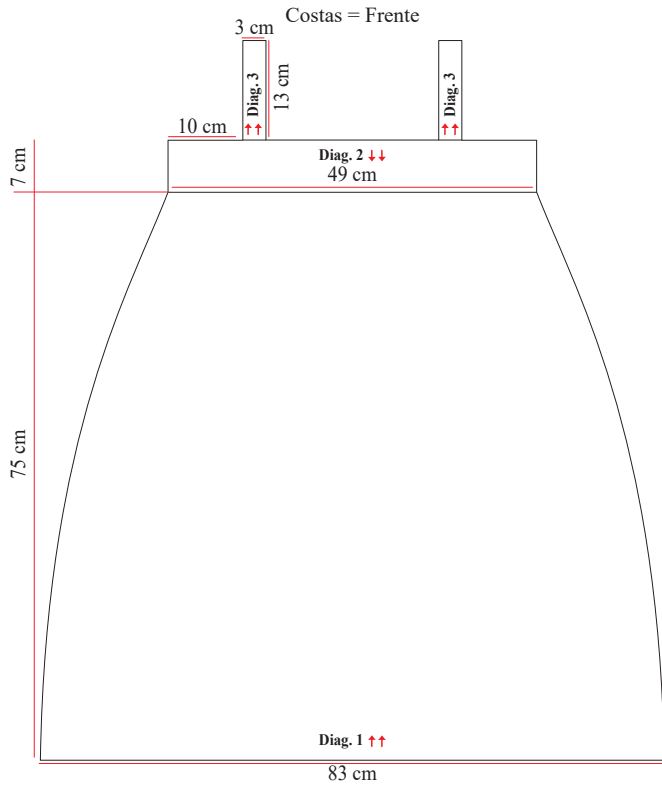


Diagrama 2 - Ponto fantasia (B)

Unir os p.b. da 6ª carr. (diag. 2), na última carr. do p. fantasia (A)

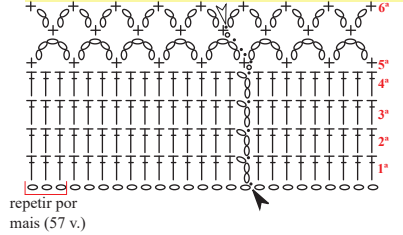


Diagrama 3 -

Alça



Legenda

- o corr.
- p.bx.
- + p.b.
- † p.a.
- ↑↑ sentido do trabalho
- ▲ início
- △ arremate