

Diagrama 3 - Ponto fantasia (B)

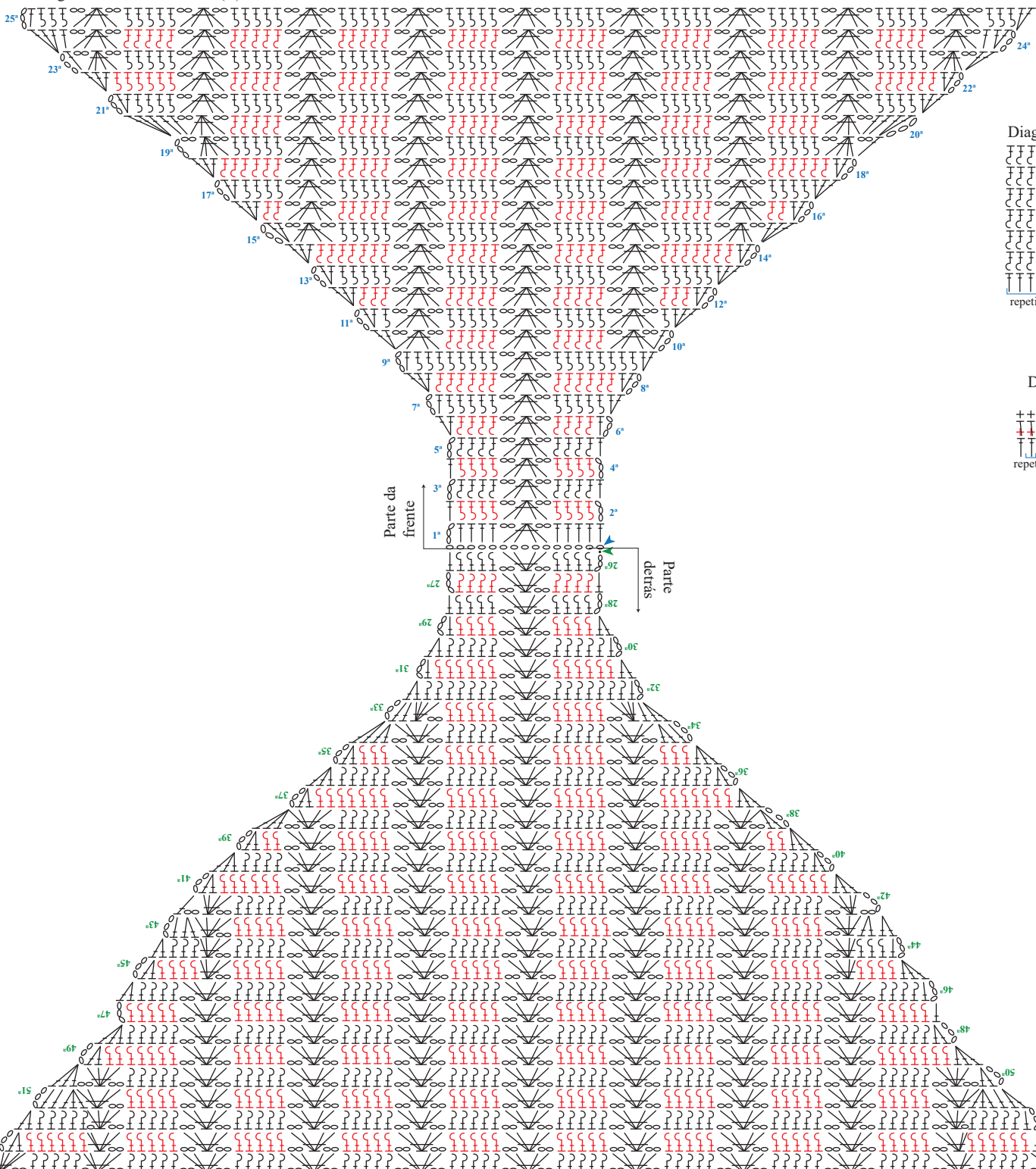


Diagrama 4 - Cordão

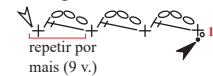


Diagrama 5 - Ponto fantasia (C)

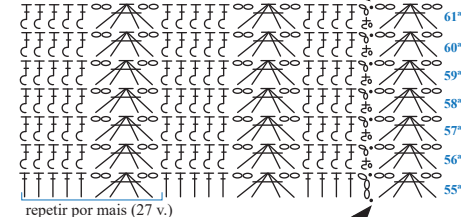


Diagrama 6 - Cós

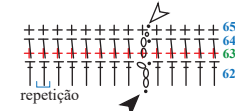


Diagrama 1 - Ponto fantasia (A)

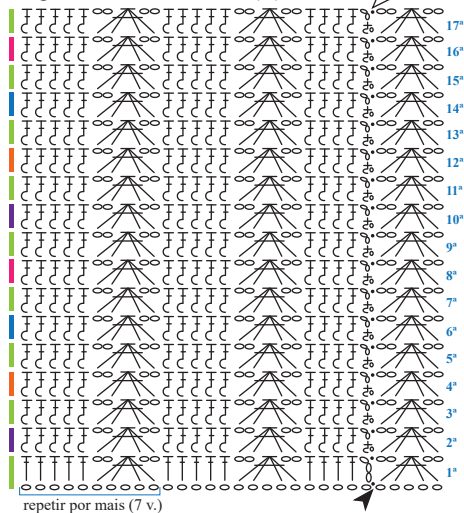
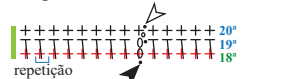


Diagrama 2 - Bico de acabamento



Legenda de pontos

- corr.
- p.b.x.
- + p.b.
- ⌘ p.b.r.a.
- ⌘ m.p.a.
- ⌘ p.a.
- ⌘ 4 pts.a.f.j.
- ⌘ p.a.r.f.
- ⌘ p.a.r.a.
- ▲ início
- △ arremate

Legenda de cores fio Charme:

- 3754 (rosa pink)
- 2194 (turquesa)
- 4445 (tangerina)
- 6567 (roxo cítrico)
- 5583 (limão)

Esquema de medidas  
Costas = Frente

