

Esquema de medidas
Cachecol

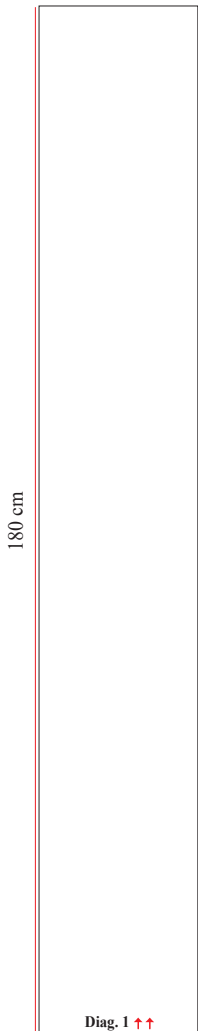
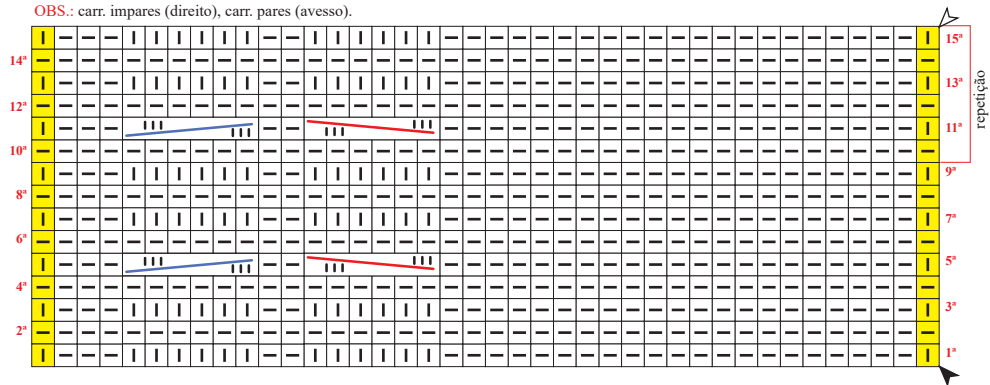






Diagrama 1 - Ponto fantasia


OBS.: carr. ímpares (direito), carr. pares (avesso).



Legenda

-  meia
-  tricô
-  pts. de borda

 colocar 3 pts. à espera numa ag. auxiliar na frente do trab., tric. 3 m., retorne os pts. deixados à espera para a ag. de tricô e tric. em m.

 colocar 3 pts. à espera numa ag. auxiliar atrás do trab., tric. 3 m., retorne os pts. deixados à espera para a ag. de tricô e tric. em m.

↑↑ sentido do trabalho

▲ início

△ arremate