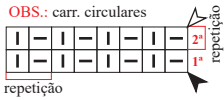


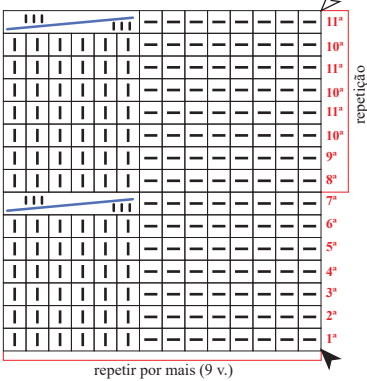
**Diagrama 1 - Barra 1/1**

OBS.: carr. circulares



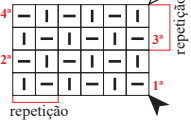
**Diagrama 2 - Ponto fantasia (A)**

OBS.: carr. circulares



**Diagrama 3 - Barra 1/1**

OBS.: carr. ímpares (direito), carr. pares (avesso).



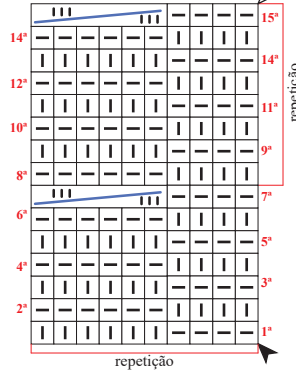
**Diagrama 4 - Ponto meia**

OBS.: carr. ímpares (direito), carr. pares (avesso).



**Diagrama 5 - Ponto fantasia (B)**

OBS.: carr. ímpares (direito), carr. pares (avesso).



**Legenda**

meia tricô



colocar 3 pts. à espera numa ag. auxiliar atrás do trab., tric. 3 m., retorne o p. deixado à espera para a ag. de tricô e tric. em m.

▲ início ▲ arremate ↑↑ sentido do trabalho

**Esquema de medidas**

