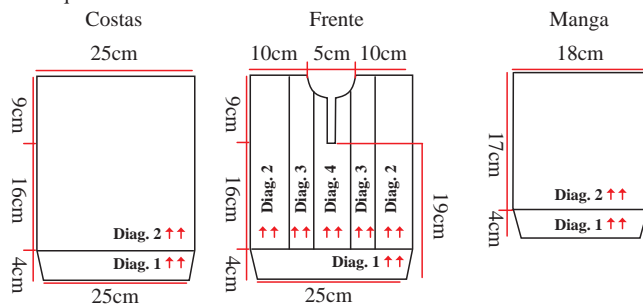


Esquema de medidas



Legenda

- meia
- tricô
- laç.
- ⊗ 2 p. j. em m.
- ⊗ ms
- ▲ início
- △ arremate
- ↑↑ sentido do trabalho

colocar 3 pts. à espera numa ag. auxiliar na frente do trabalho, 3 m., retorne o pts. deixados à espera para a ag. de tricô e trab. em m.

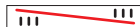


Diagrama 4 - Ponto fantasia (B)

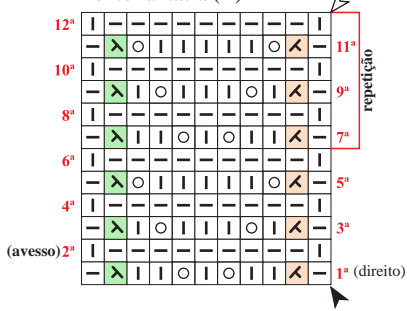


Diagrama 3 - trança

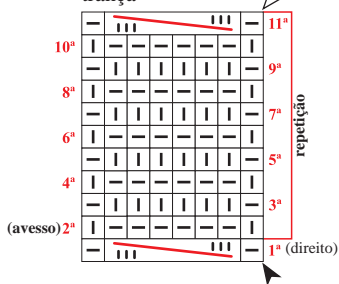


Diagrama 1 - Barra 2/2

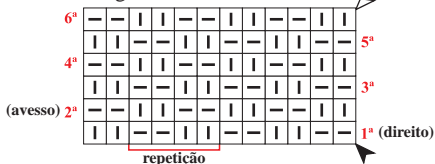


Diagrama 2 - Ponto Fantasia (A)

