

Esquema de medidas

Diagrama 1 - Ponto fantasia (A) - tric. em carr. circulares

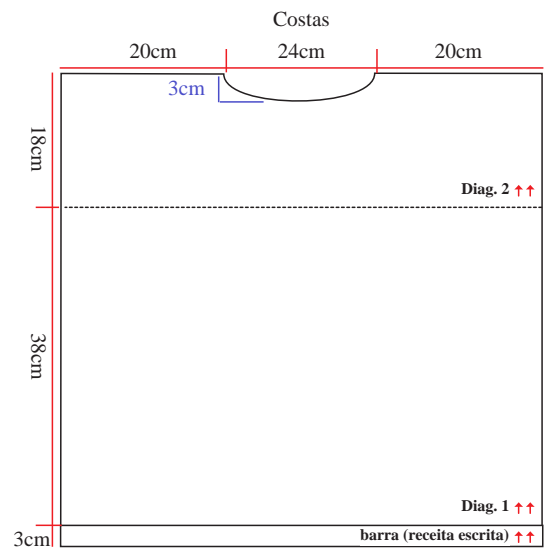
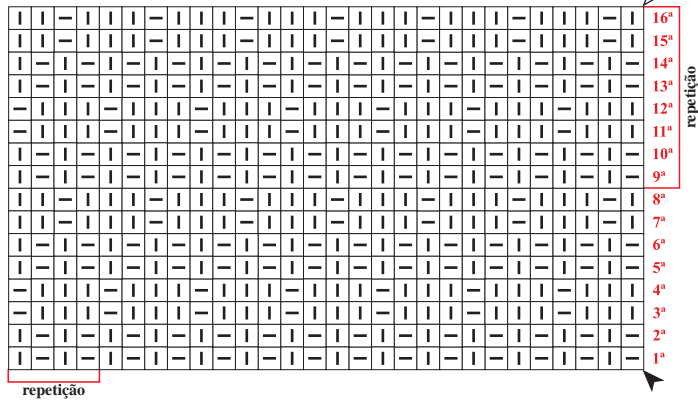


Diagrama 2 - Ponto fantasia (B) - tric. em carr. de ida e volta

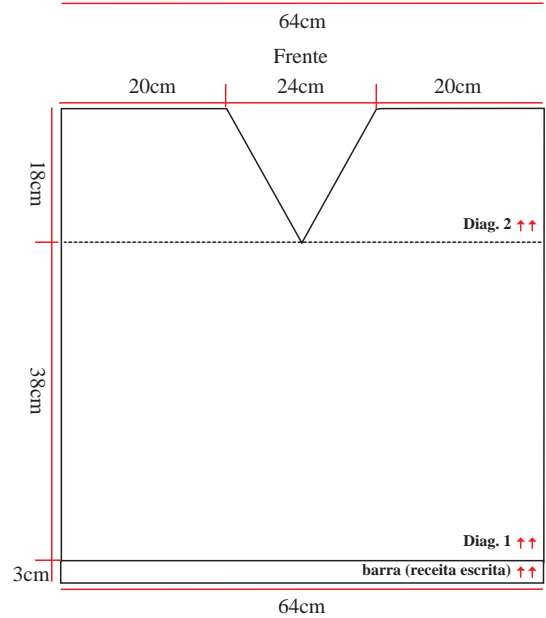
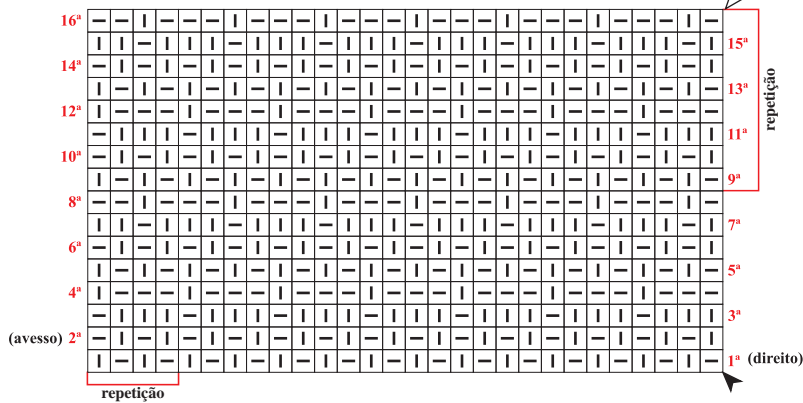


Diagrama 3 - Ponto fantasia (C) - tric. em carr. circulares

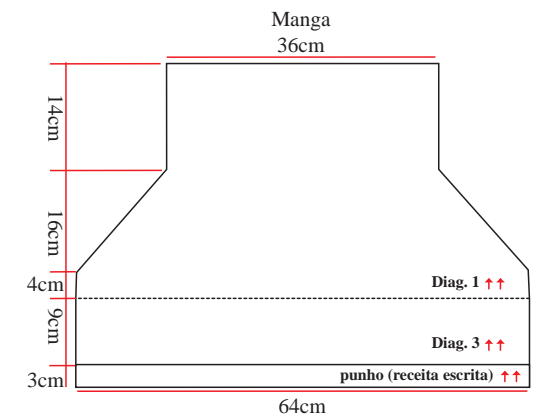
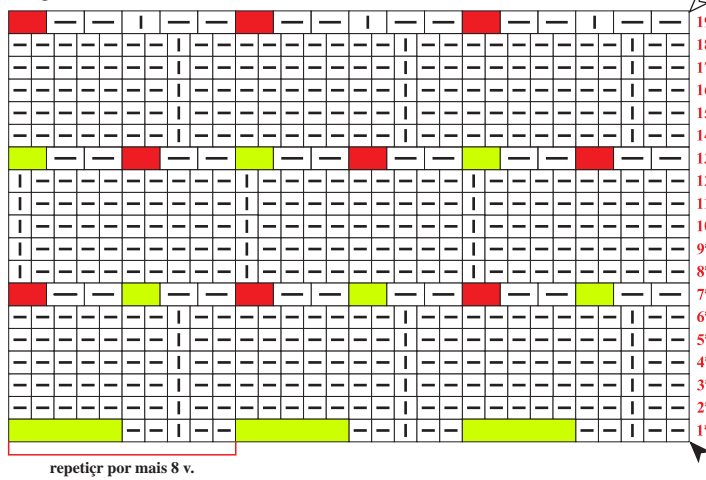
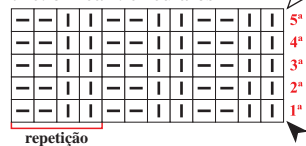


Diagrama 4 - Barra 2/2 - tric. em carr. circulares



Legenda

- ▬ meia
- ▬ tricô
- 5 pts. j. em m.
- laç.
- tric. sobre 1 p. da carr. anterior
- 5 pts. (1m., 1 laç., 1 m., 1 laç., 1 m.)
- ▲ início
- △ arremate
- ↑↑ sentido do trabalho