

Esquema de medidas

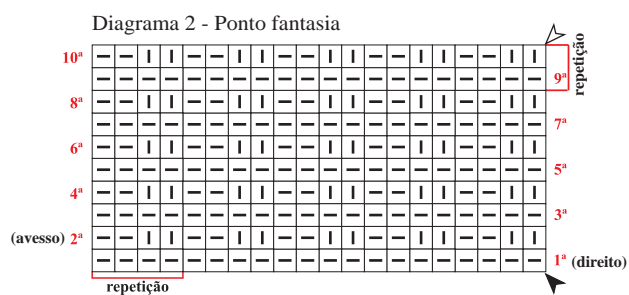
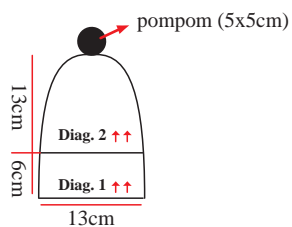


Ilustração para fazer o pompom:

Fig.01

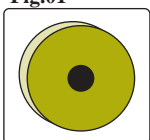


Fig.01: Corte 2 bases de papelão

Fig.02

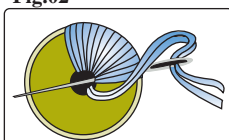


Fig.02: Preencher a circunferência

Fig.03

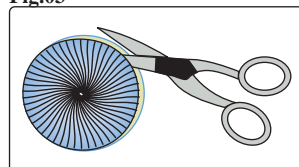


Fig.03: corte os fios entre os dois papelões

Fig.04

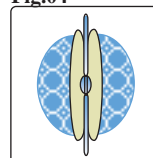


Fig.04: Com um nó prenda a parte central do pompom. Em seguida recorte o papelão.