

Diagrama 3- Ponto fantasia (C)

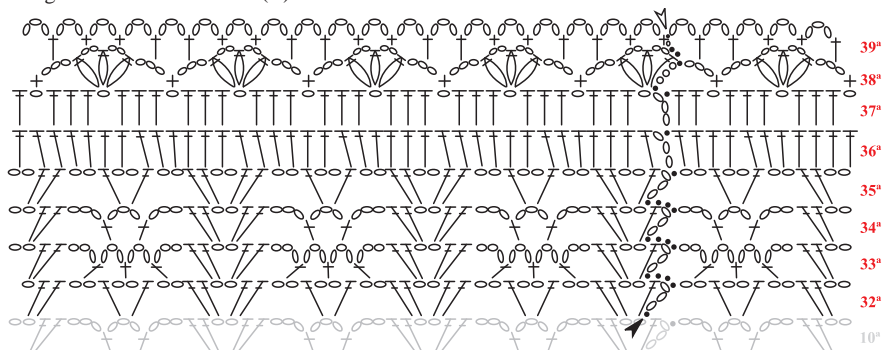


Diagrama 4 - Ponto fantasia (D)

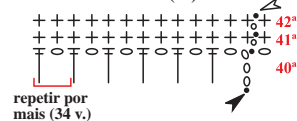


Diagrama 2- Ponto fantasia (B)

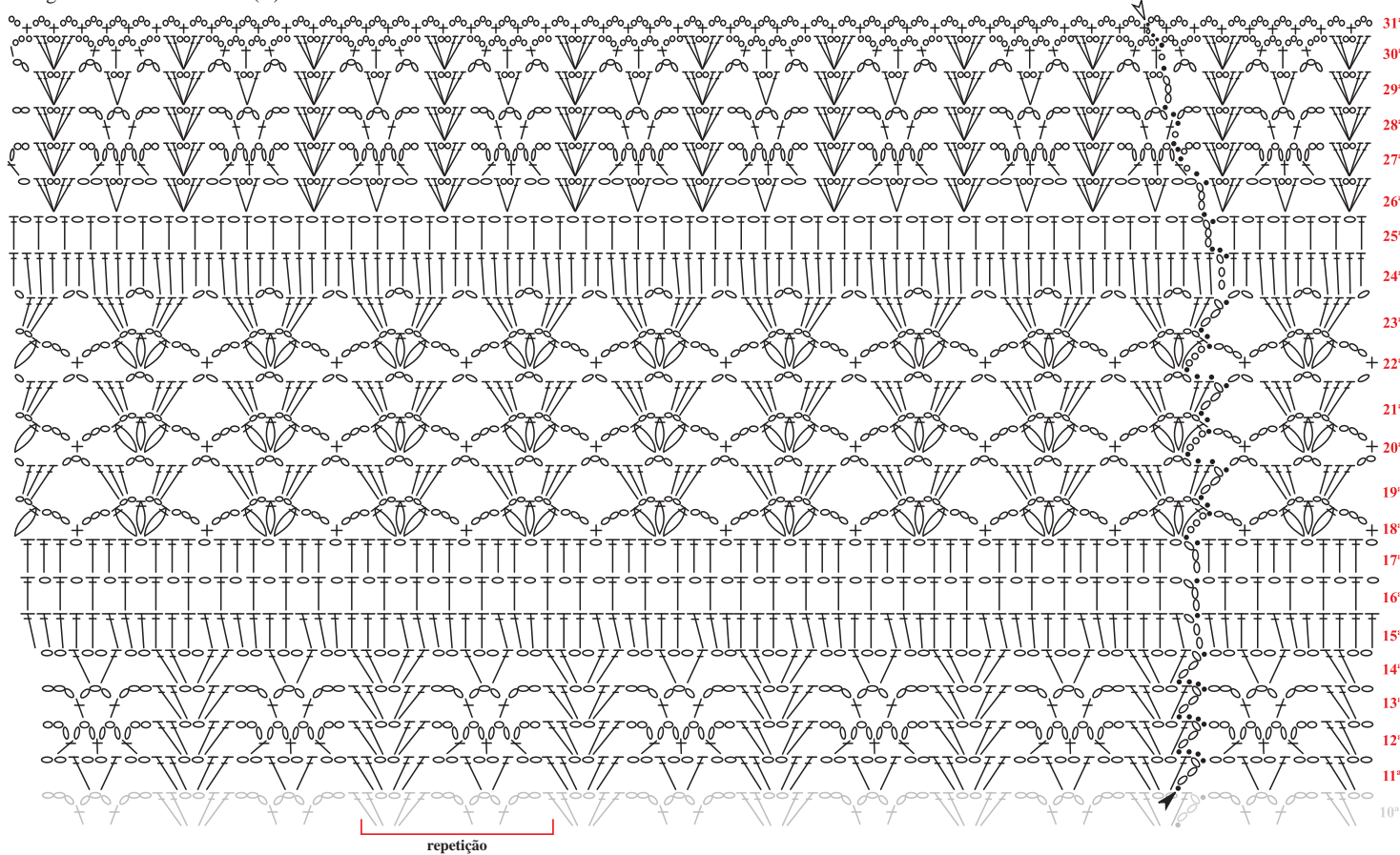
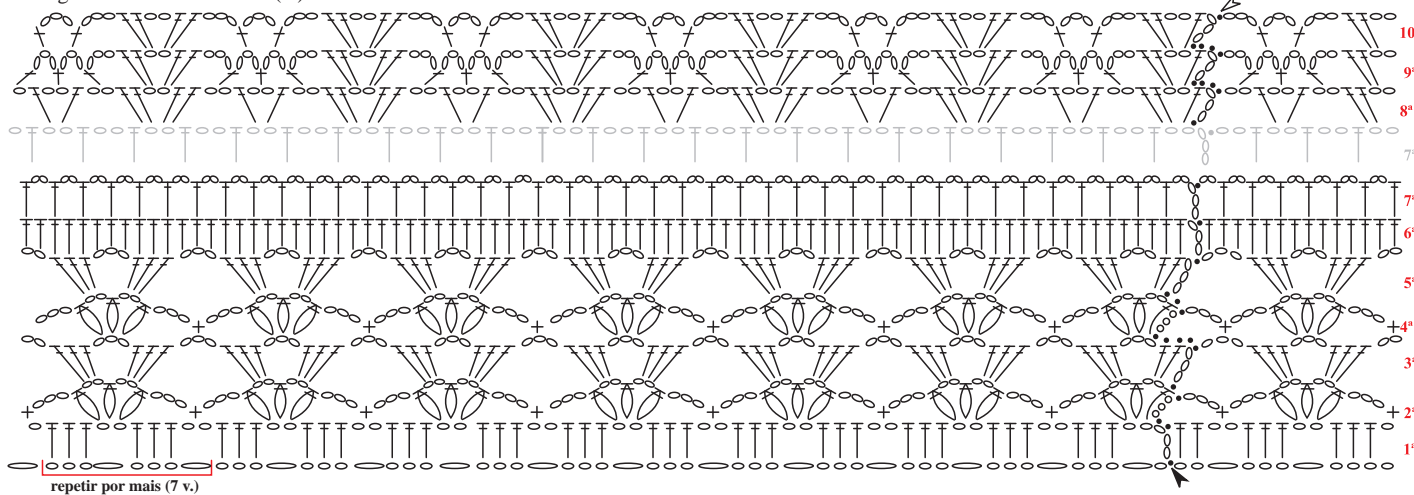


Diagrama 1- Ponto fantasia (A)



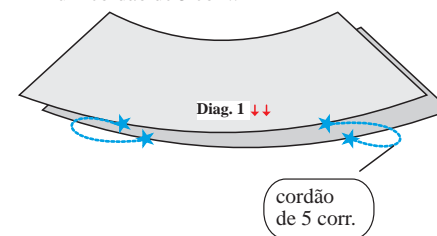
Legenda

- corr.
- p.bx.
- + p.b.
- ⊥ p.a.
- ⊖ 2 p.a.f.j.
- ▲ início
- △ arremate
- ↑↑ sentido do trabalho

Esquema de medidas

1ª etapa (diag. 1).

Dobre a pala ao meio determinando frente e costas. Demarque as cavas (15cm), unir as estrelas pelas laterais com um cordão de 5 corr.



Costas = Frente

2ª etapa (corpo, mangas e decote)

