

Gráfico 1 - Flor

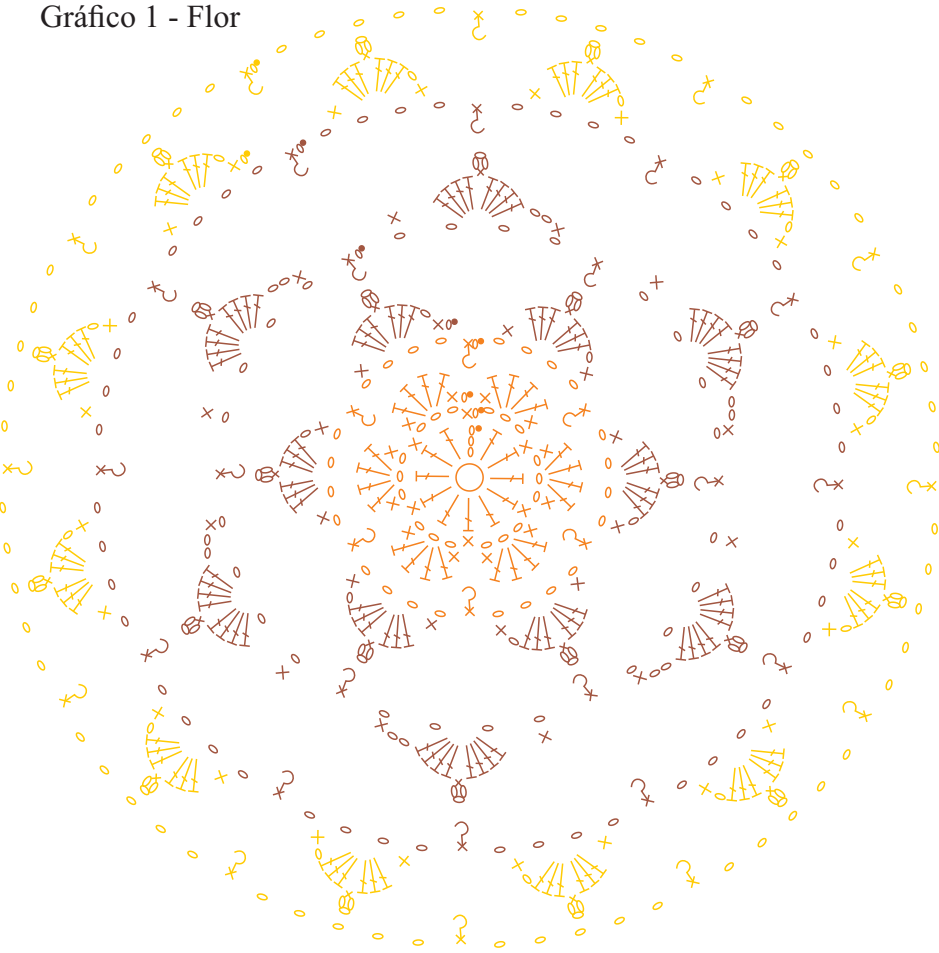


Gráfico 2 - Motivo

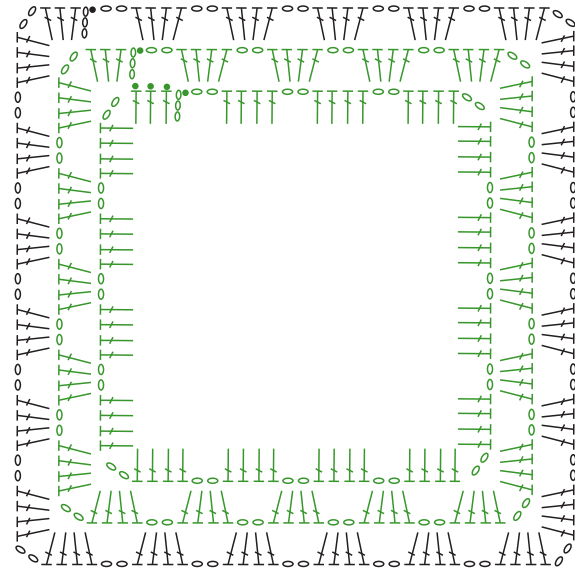
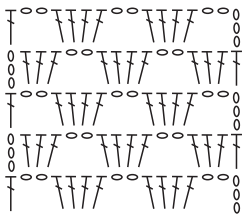
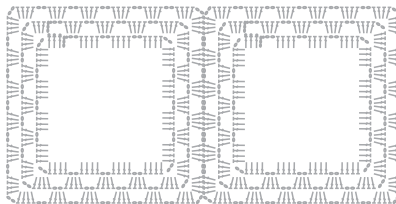


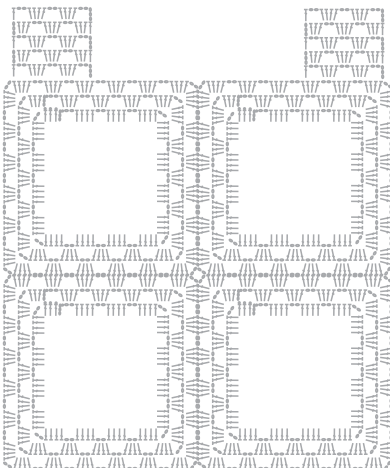
Gráfico 3 - Alça do Tapete de encaixe do vaso



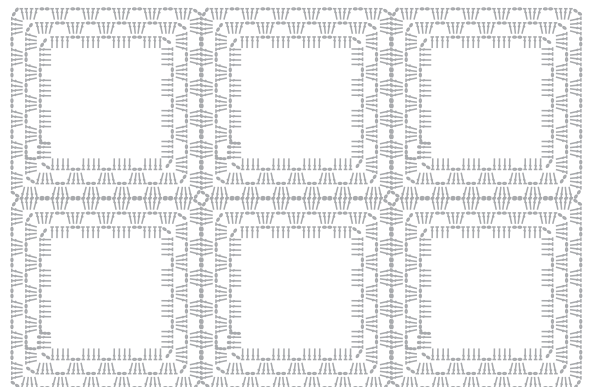
Esquema de Montagem Tampa



Esquema de Montagem Tapete de Encaixe do Vaso



Esquema de Montagem Tapete da Pia



Legenda

- o Correntinha
- ┆ Ponto Alto
- × Ponto Baixo
- Ponto Baixíssimo
- ⋈ Ponto Baixo Pegando por trás
- ┆ Ponto Alto Duplo
- Barroco Natural 4/6 (20)
- Barroco Maxcolor (4456)
- Barroco Multicolor (9391)
- Barroco Multicolor (9317)

Gráfico 5 - Acabamento parte interna do Tapete de encaixe do vaso

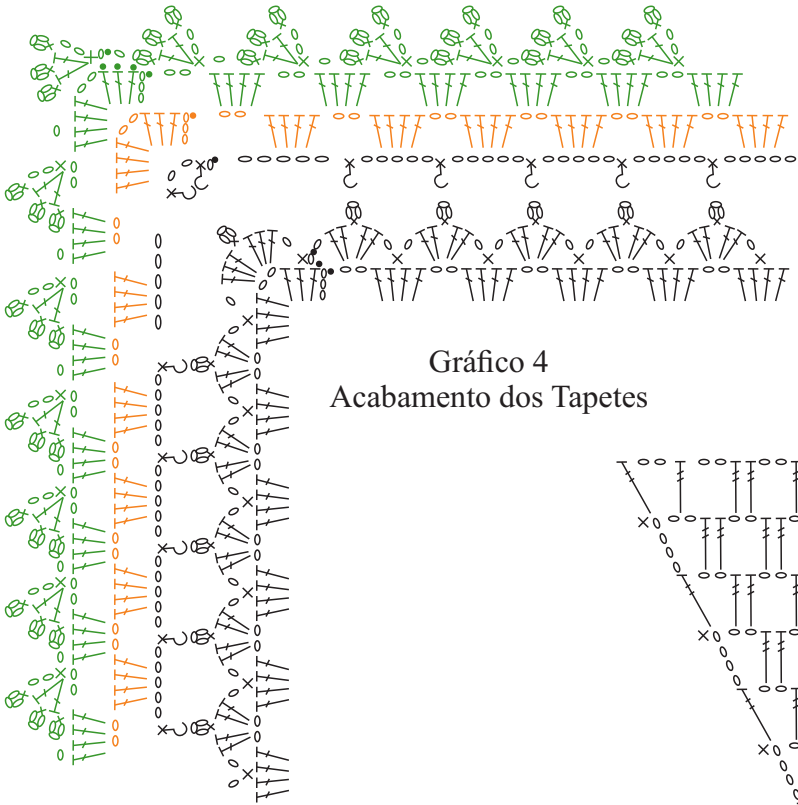


Gráfico 4
Acabamento dos Tapetes

Gráfico 7 - Parte de trás da tampa

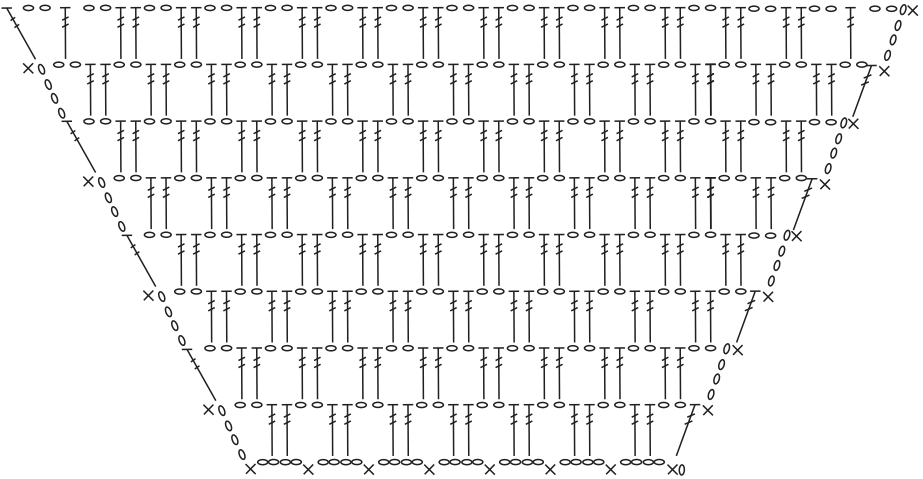


Gráfico 6 - Tampa do Vaso

