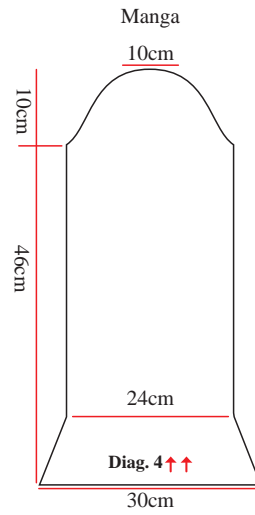
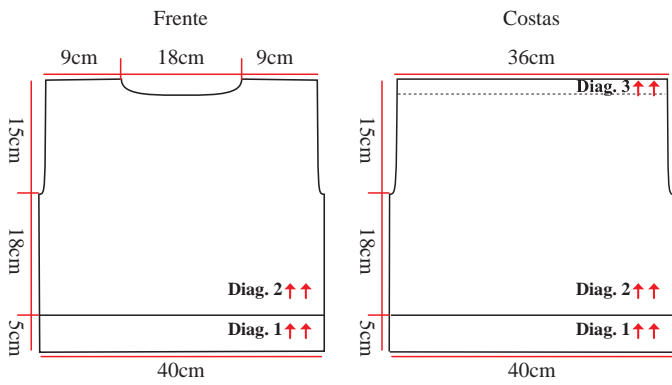


Esquema de medidas



Esquema de pts. montagem da gola

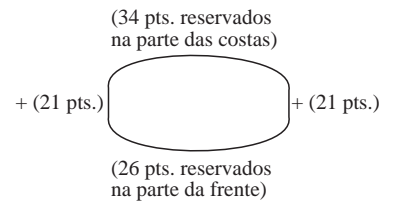
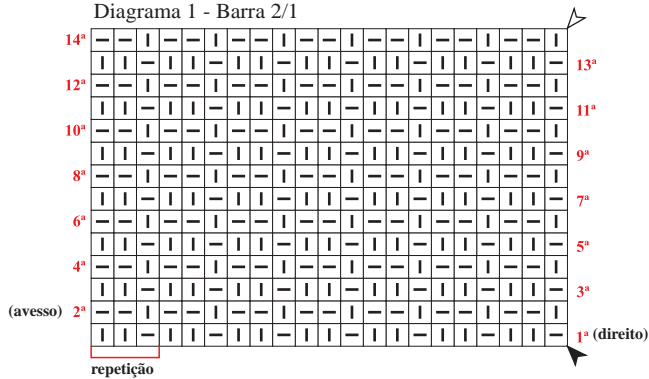


Diagrama 1 - Barra 2/1



Legenda

- meia
- tricô
- ms (mate simples)
- md (mate duplo)
- início
- arremate
- ↑↑ sentido do trabalho

Diagrama 3 - Costas



Diagrama 2 - Frente

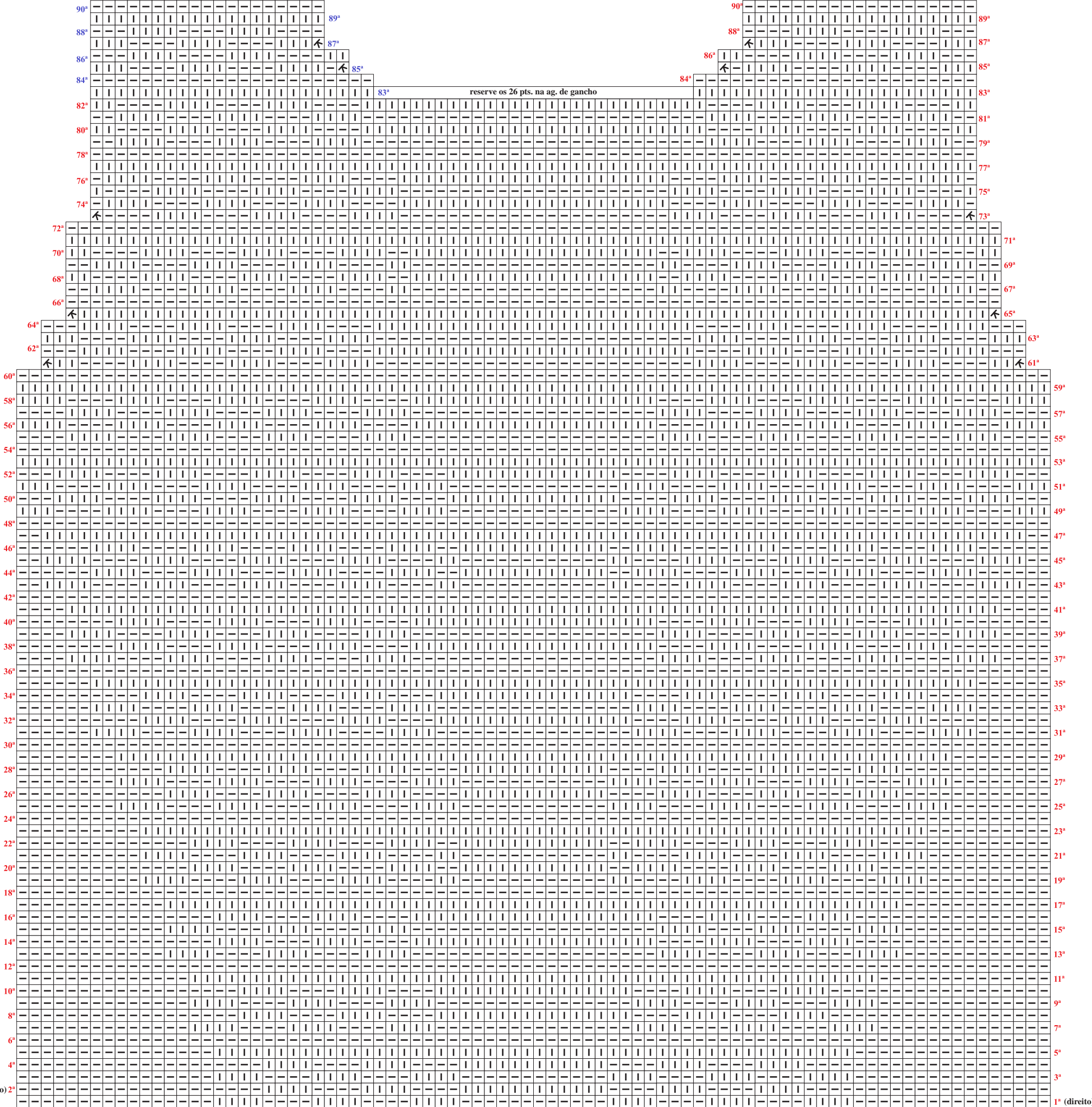
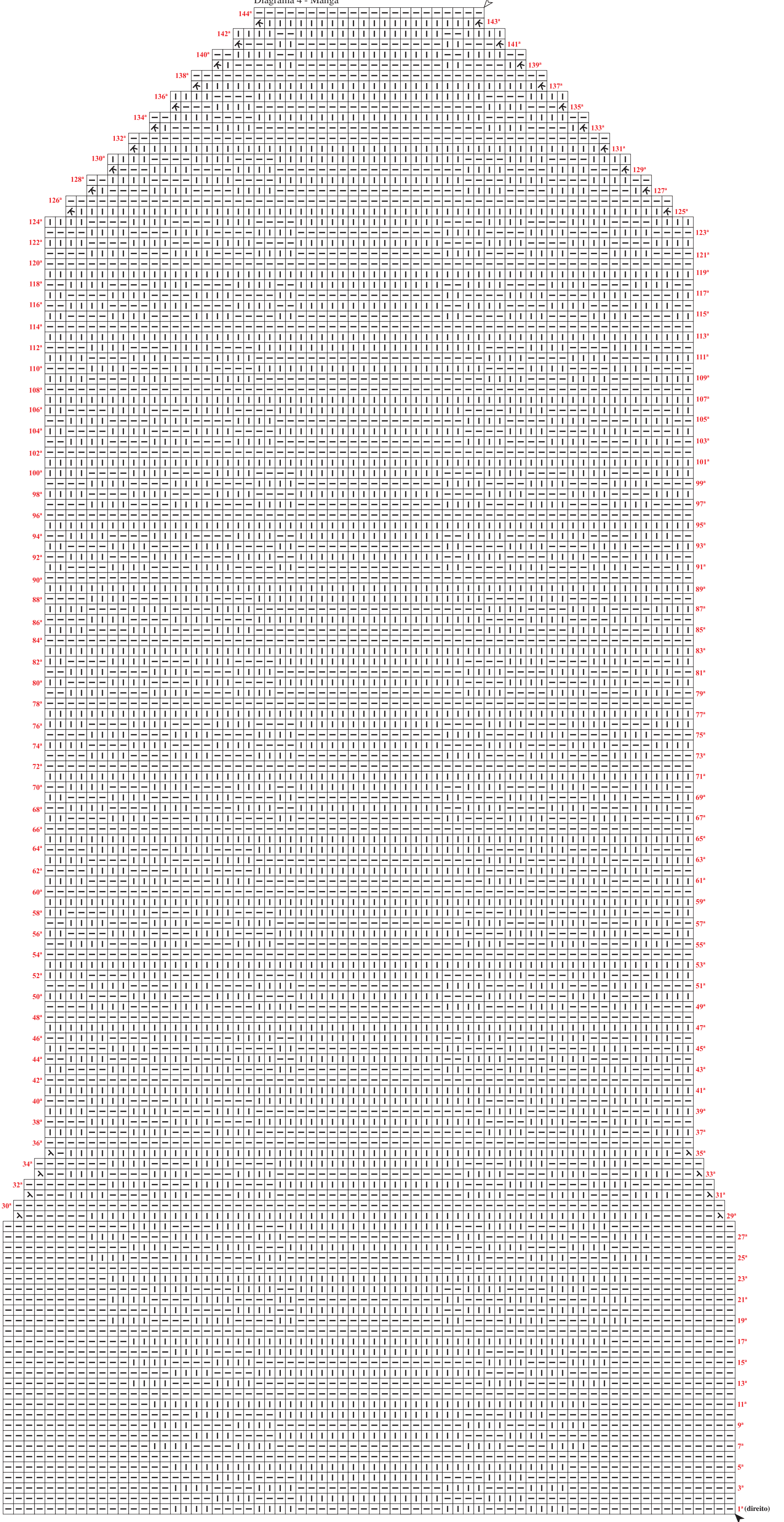


Diagrama 4 - Manga



(avesso)

1° (direito)