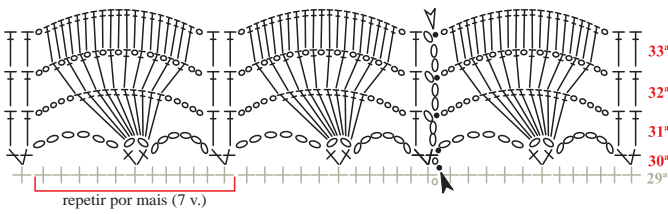


Diagrama 4 -  
Bico de acabamento



Diagrama 3 -  
Ponto fantasia (B)



Legenda

- corr.
- p.bx.
- + p.b.
- † p.a.
- ▲ início
- △ arremate
- ↑↑ sentido do trabalho

Diagrama 2 -  
Ponto fantasia (A)

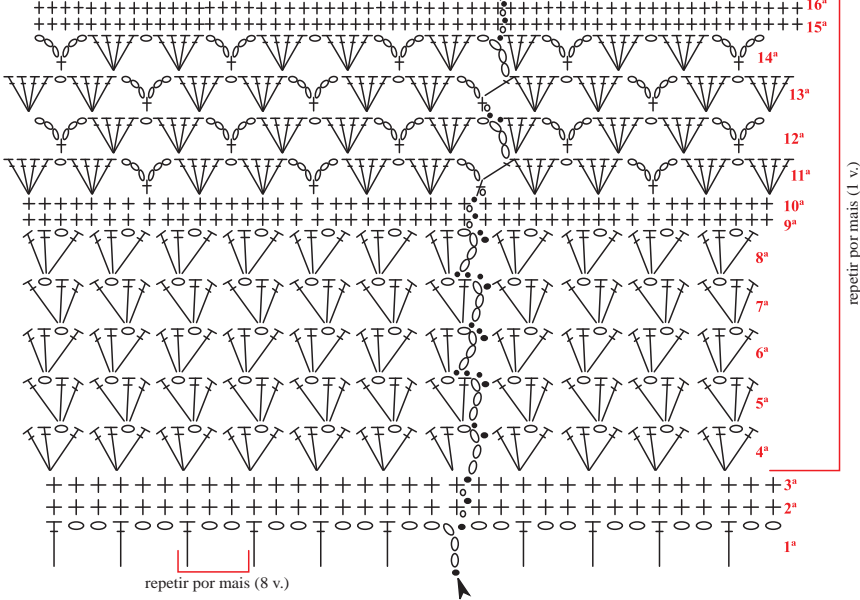
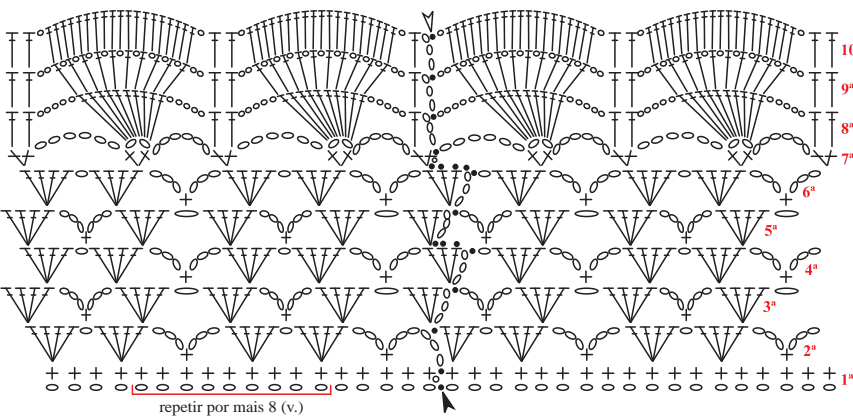


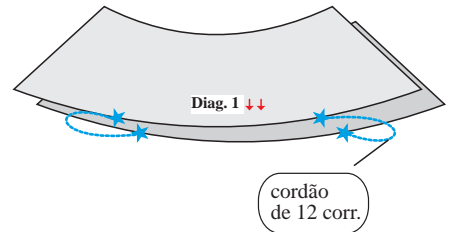
Diagrama 1 - Pala



Esquema de medidas

1ª etapa (diag. 1).

Dobre a pala ao meio determinando frente e costas. Demarque as cavas (16cm), unir as estrelas pelas laterais com um cordão de 12 corr..



2ª etapa (corpo).

