

Diagrama 3 - Ponto meia
- (carr. de ida e volta)

OBS.: carr. ímpares (direito),
carr. pares (avesso)

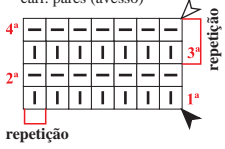


Diagrama 4 - Barra 1/1
- (carr. de ida e volta)

OBS.: carr. ímpares (direito),
carr. pares (avesso)

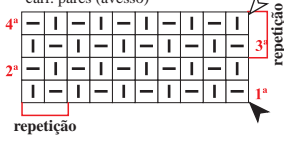


Diagrama 5 - Ponto de
barra 1/1 - (carr. circulares)

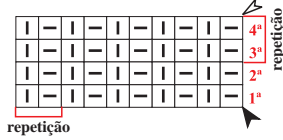


Diagrama 6 - Gola -
(carr. circulares)

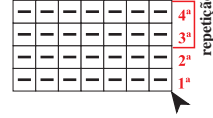


Diagrama 7 -
Cordões de tricô -
(carr. circulares)

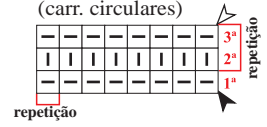


Diagrama 2 - Ponto fantasia (carr. circulares)

A = p. meia; B = p. fantasia parte central da frente.

□ = repetição p. meia (carr. pares e ímpares em p. meia)

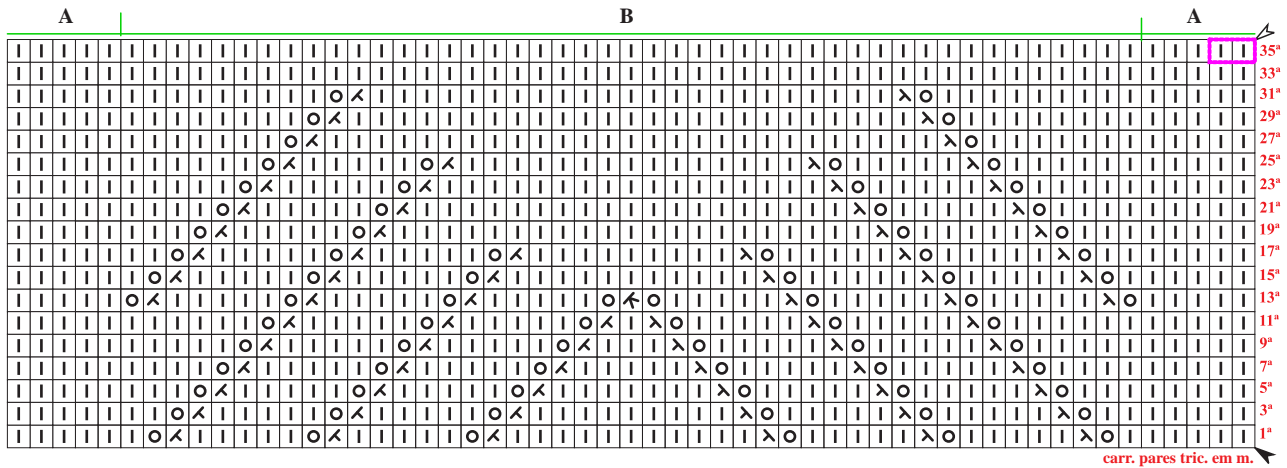
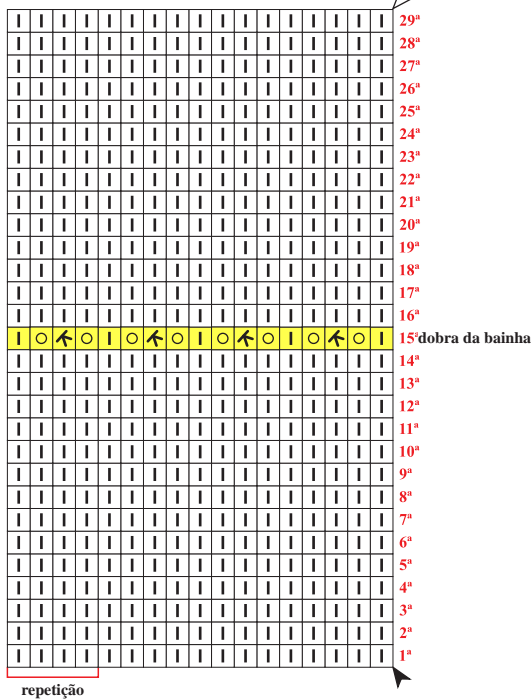
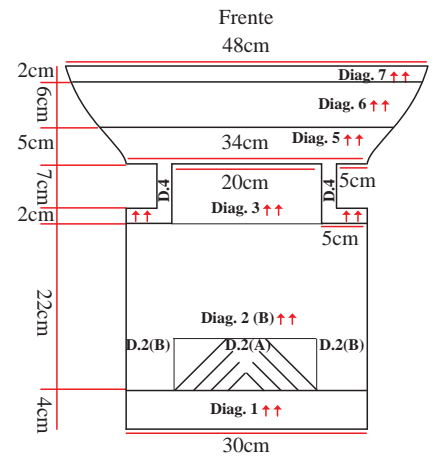
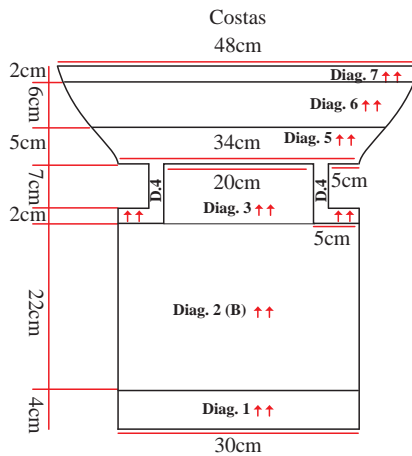


Diagrama 1- Bainha ondulada
- carr. circulares



Esquema de medidas



Legenda

- meia
- ▬ tricô
- laçada
- ⋈ 2 pts. j. em m.
- ⊗ ms
- ⋈ 3 pts. j. em m.
- ▲ início
- △ arremate
- ↑↑ sentido do trabalho