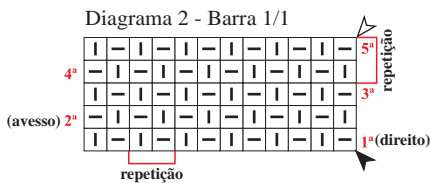
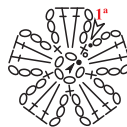


**Diagrama 3 - Roseta**



**Legenda do tricô**

- ▬ meia
- tricô
- ▲ início
- △ arremate
- ↑↑ sentido do trabalho

**Legenda do crochê**

- corr..
- p.bx.
- + p.b.
- ⊥ p.a.

**Esquema de medidas**  
1ª etapa: cachecol

