

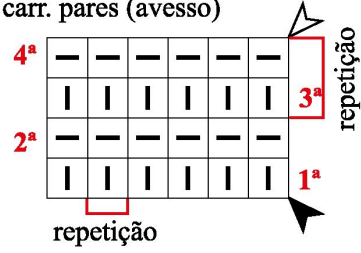
Diagrama 1 - Barra 2/2

OBS.: carr. ímpares (direito),
carr. pares (avesso)

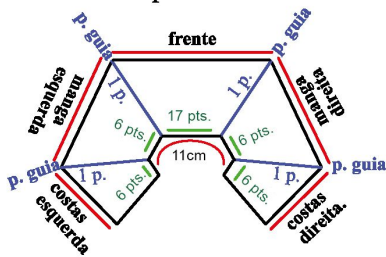


Diagrama 2 - Ponto meia


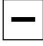



OBS.: carr. ímpares (direito),
carr. pares (avesso)



Esquema de distribuição da pala:

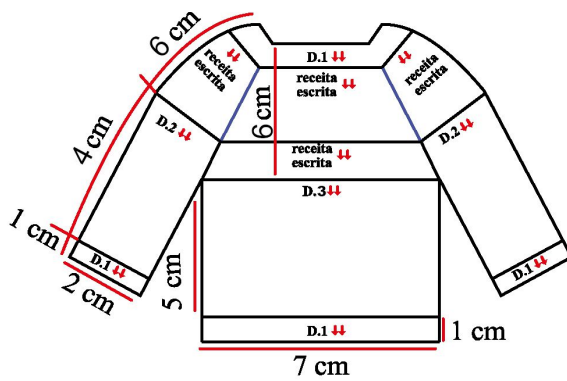


Legenda

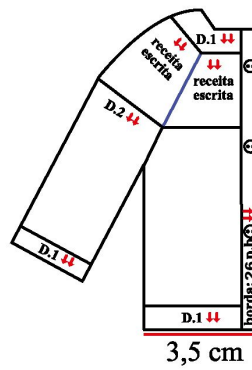
-  meia
-  tricô
-  início
-  arremate
-  sentido do trabalho

Esquema de medidas

Frente



Costas esquerda



Costas Direita

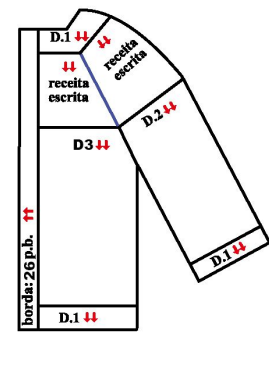


Diagrama 3



A parte em preto no diagrama (desenho do fantasma) deve ser feita com o fio GLOW